

# MedTel News

November 2009

MedTel Software Ltd. 1-888-837-2085

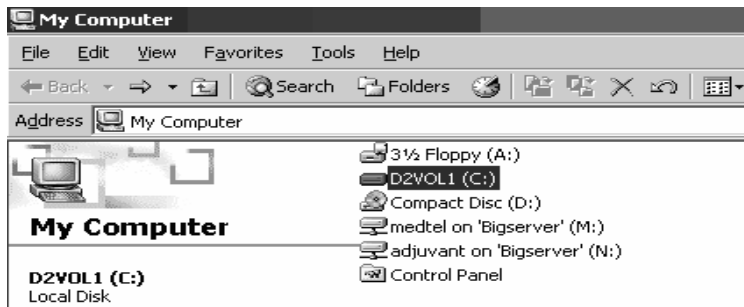
[www.medtel.on.ca](http://www.medtel.on.ca)

## MedTel Release PBA Version 3.8F – Vista/WIN7 Install

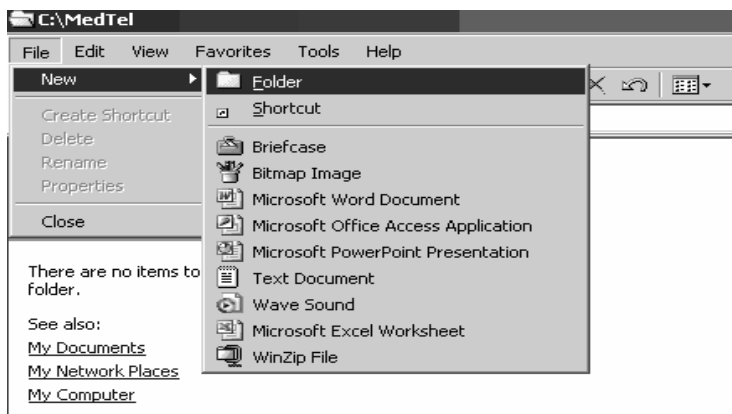
Step 1: Create a new folder on your C: Drive – “C:\Medtel\Pba”

For Vista/Windows 7, PBA needs to load into a different default directory

- a) Create a new Folder in C: and call it Medtel
  - a. From Windows Explorer, find and select ‘My Computer’
  - b. Under ‘My Computer’, find and select ‘Local Disk (C:)’



- b) Create a subfolder in Medtel and call it PBA
  - a. With ‘Local Disk (C:) selected’, Select “file->new->folder’ from the upper left menu of the dialog
  - b. Name the folder ‘Medtel’



- c) If the new ‘Medtel’ folder is not selected, click on it to select
  - a. Select ‘file->new->folder’ from the upper left menu of the dialog
  - b. Name the folder ‘PBA’
  - c. This folder should visually appear “inside”, or under the Medtel folder
  - d. The program will be installed into this PBA folder.

## MedTel Release PBA Version 3.8F – Vista/WIN7 Install

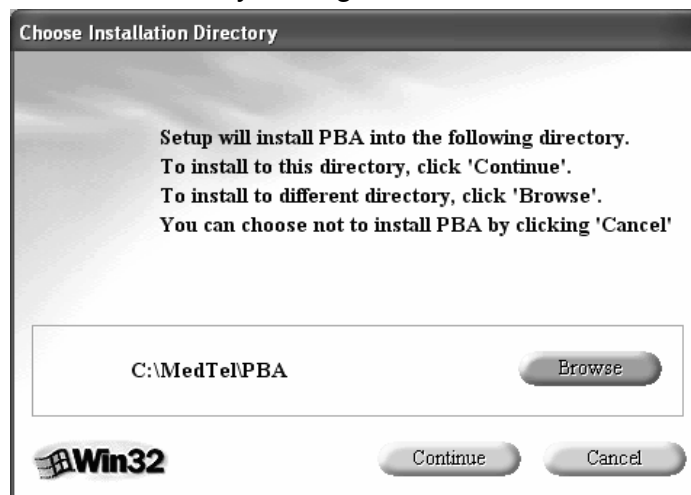
We are now ready to load PBA, put the CD into the CD drive.

1. You should be presented with:
  - a. “Welcome to the Personal Billing Assistant V3.8F – CONTINUE”
  - b. Follow on-screen instructions
  - c. The ‘Choose Installation Directory’ will appear
  - d. Click ‘Browse’ and select “Local Disk C:, MedTel, Pba

Select C:\MedTel\PBA



The ‘Choose Installation Directory’ dialog should look like, and then click ‘Continue’



## MedTel Release PBA Version 3.8F – Vista/WIN7 Install

Follow the on-screen instructions, the install should now complete successfully and PBA should open.

### **NOTES:**

- a) A “Program Compatibility Assistant” dialog may appear, if so, select “This program installed correctly.”
- b) If “Acrobat Reader” is not found, a warning will appear. Either download the reader from the net or run the file located in C:\Medtel\PBA\Bin\3<sup>rd</sup> Party\AdbeRdr920\_en\_us.exe
- c) For V3.8f you are still required to load the November SOB and update time unit values if applicable.